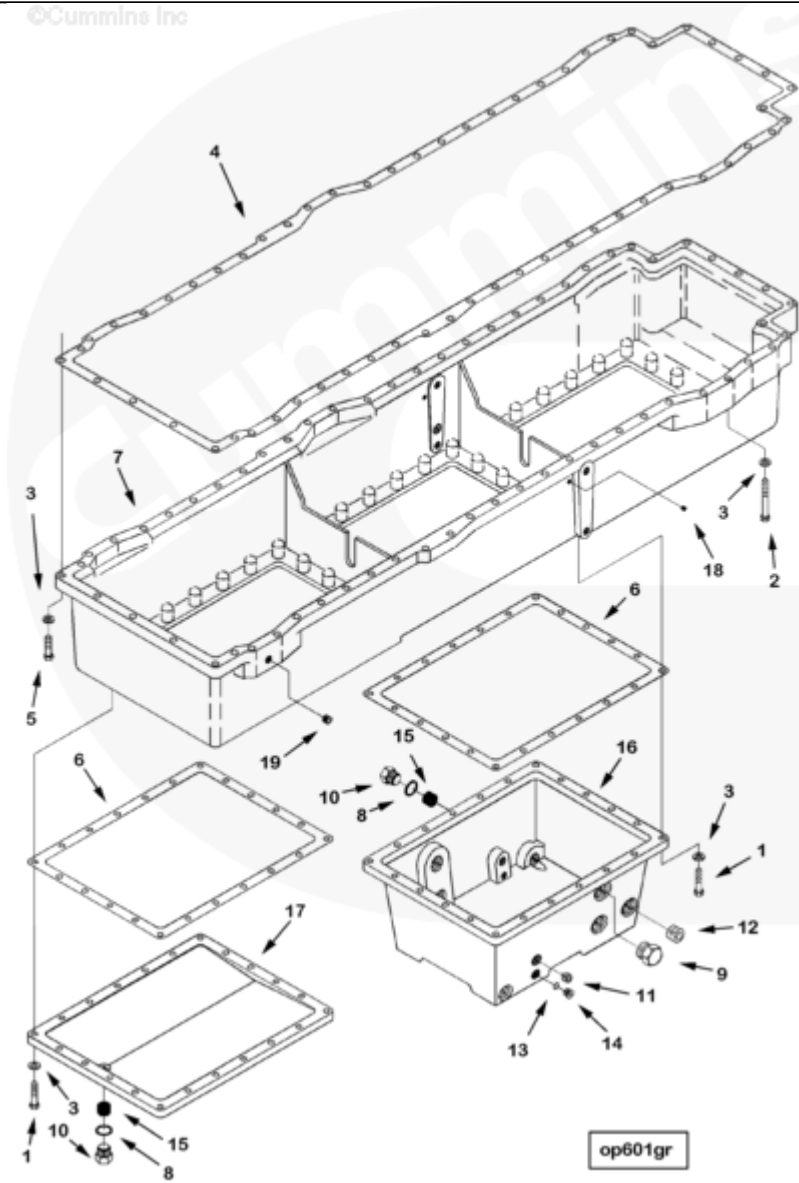




Parts Catalog - Option Detail

Electronic Parts Catalog - Option Detail				
Option	Group	Graphic	Film Card	Date
OP6006-05	07.01	op601gr	K38	03-DEC-07
Engines	GTA38, K38, KTA38GC CM558, QSK38 CM2150 K106, QSK38 CM2150 MCRS, QSK38 CM850 MCRS			



[SMALL](#) | [MEDIUM](#) | [LARGE](#)

Cart	Ref No	Part Number	Part Description	Required	Remarks
<input type="button" value="View My Cart"/>					
		OP6006-05	Oil Pan		Center sump oil pan....(More)

					Oil pan adapter with two
					removable end covers and
					center sump.
					Low level: 23 US gallons.
					Side use
					High level: 30 US gallons.
<input type="checkbox"/>	1	106069	Hexagon Head Cap Screw	31	7/16 - 14 X 2 in.
<input type="checkbox"/>	2	108767	Hexagon Head Cap Screw	29	7/16 - 14 X 3 1/2 in.
<input type="checkbox"/>	3	3000082	Plain Washer	126	15/32 in.
<input type="checkbox"/>	4	3043212	Oil Pan Gasket	1	
<input type="checkbox"/>	5	S 140	Hexagon Head Cap Screw	66	7/16 - 14 x 1 3/4 in.
<input type="checkbox"/>	6	3043211	Oil Pan Gasket	3	
<input type="checkbox"/>	7	3640031	Oil Pan Adapter	1	
<input type="checkbox"/>	8	67946	Plain Washer	4	1 1/32 in.
<input type="checkbox"/>	10	3055069	Threaded Plug	4	1 - 18 UNS.
<input type="checkbox"/>	11	3628606	Pipe Plug	2	1/2 - 14.
<input type="checkbox"/>	12	3628608	Pipe Plug	2	
<input type="checkbox"/>		3037536	Threaded Plug	2	9/16 - 18 UNF
<input type="checkbox"/>	13	3037537	O-Ring Seal	2	
	14	3040813	Threaded Plug	2	9/16 - 18 UNF
<input type="checkbox"/>		3088854	Oil Pan	1	
<input type="checkbox"/>	9	3032629	Threaded Plug	1	1 5/16 - 12 UNF.
<input type="checkbox"/>	15	200845	Threaded Insert	4	
	16	3629988	Oil Pan	1	
	17	3028696	Oil Pan Cover	2	
<input type="checkbox"/>	18	3628604	Pipe Plug	2	1/8 - 27 X 0.3 in.
<input type="checkbox"/>	19	3628609	Pipe Plug	1	3/8-18.